



Service instruction: SM057E
Revision: 1
Date: 07-07-2016
Page no.: 1

Title: Replacement bearing roller H750 on PS, PSS and RS door systems

1. Purpose:

This service instruction describes how to replace a guide roller H750 on the PS, PSS and RS door shaft.

Revision no.	Date:		
1	07-07-2016	Description of the change:	First release
		Name & function:	Menno Coehoorn Service Engineer

Title: Replacement bearing roller H750 on PS, PSS and RS door systems

2. References:

2.1. None

3. Definitions:

3.1. None

4. Forms:

4.1. None

5. Scope:

5.1. This work instruction can be applied to all PS, PSS and RS door systems. The used pictures can vary per door type. This has no influence on the work procedure.

6. Material/Tools:

6.1. Loctite 243 or equivalent

6.2. Tool to loosen the lower support fasteners (type depends on bus manufacturer)

6.3. Bearing roller (Ventura part number H750)

Needed tools per door system

6.4. PS

- Hexagon 5mm
- Hexagon 7mm
- Spanner 13mm 2x

6.5. PSS

- Hexagon 4mm
- Hexagon 6mm
- Spanner 13mm

6.6. RS

- Hexagon 7mm
- Spanner 13mm
- Spanner 17mm

Title: Replacement bearing roller H750 on PS, PSS and RS door systems

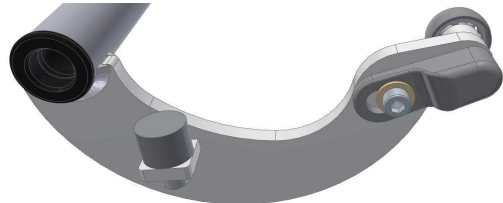
7. Execution:

7.1. Difference between door systems.

PS Plug Slide



Top view



Bottom view

PSS Plug Slide Separate



Top view

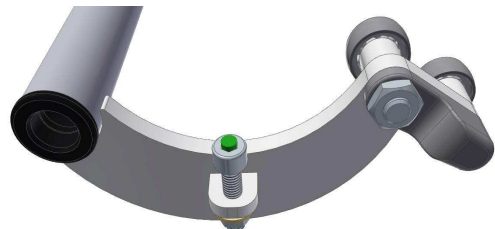


Bottom view

RS Rapid Slide




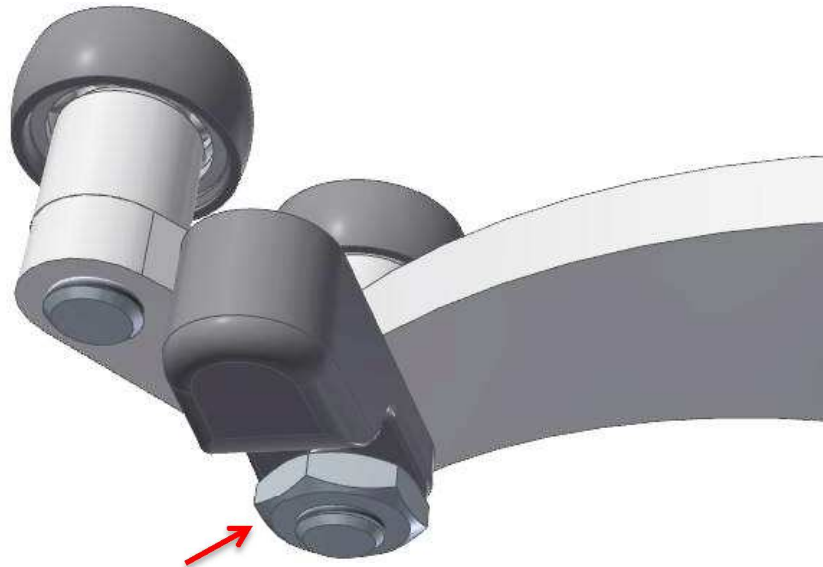
Top view



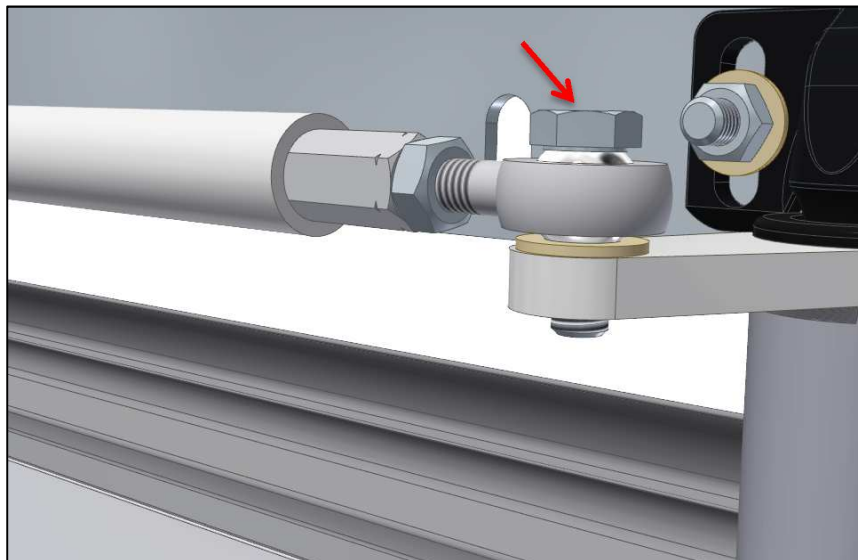
Bottom view

Title: Replacement bearing roller H750 on PS, PSS and RS door systems

-  7.2. Put the door system in emergency situation so the door system will not move accidentally
- 7.3. Move the door leaf to half open position
- 7.4. Loosen the lever block on the door shaft's lower lever and rotate to the outside of the door rail

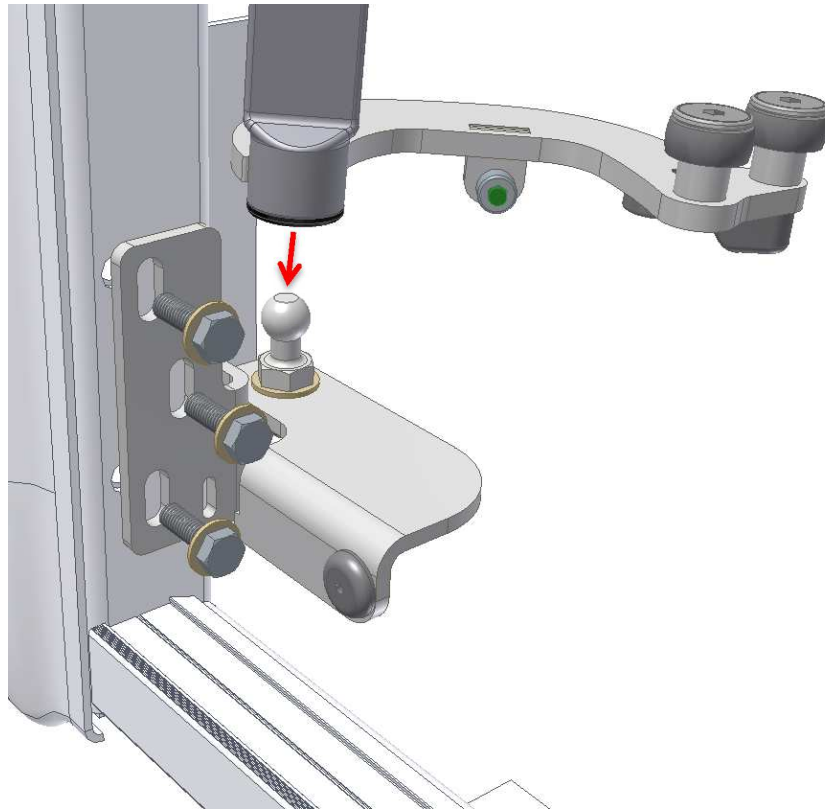


- 7.5. Disconnect the connecting rod from the door shaft's top lever

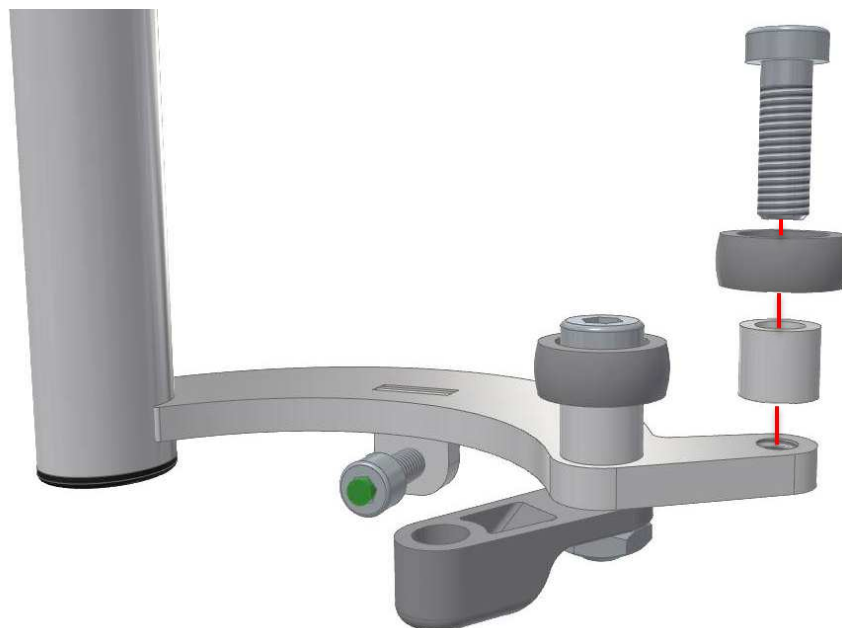


Title: Replacement bearing roller H750 on PS, PSS and RS door systems

- 7.6. Prevent the door shaft from falling and loosen the bottom support fasteners. Take out the door shaft.



- 7.7. Remove the bolt which holds the bearing roller.



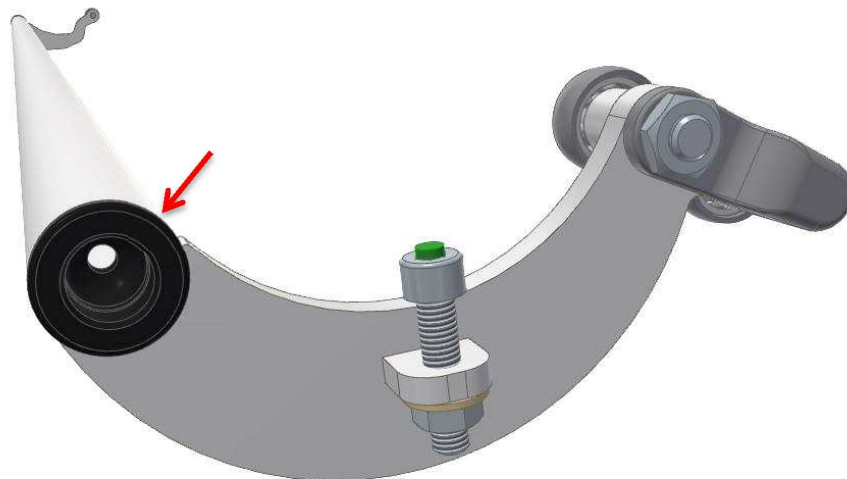
Title: Replacement bearing roller H750 on PS, PSS and RS door systems

- 7.8. Place the new bearing roller in position. Ensure that the closed side of the bearing roller should be facing upwards.



- 7.9. Apply Loctite 243 (or equivalent) to the thread and tighten the bolt

- 7.10. Check if the bearing bush on the top and bottom of the door shaft are intact. If not, replace with part B689 Bearing Bush.



- 7.11. Place the door shaft back in position. Move the bottom support upwards so there is no vertical play.



- 7.12. Rotate the lever block back in position and tighten the bolt.



- 7.13. The distance between the door rail and door shaft lever should be 4-8mm. If not, consult the installation manual for more information.