



Service instruction: SM044E
Revision: 1
Date: 02-02-2015
Page no.: 1

Title: Replacing a lock on an IG4 door leaf

- 1. Purpose:** The purpose of this service instruction is to describe the method for replacing a lock from an IG4 door leaf.

Revision no.	Date:		
1	02-02-2015	Description of the change:	First release
		Name & function:	K. Slager Technical Documentation Specialist



Service instruction: SM044E
Revision: 1
Date: 02-02-2015
Page no.: 2

Title: Replacing a lock on an IG4 door leaf

2. References:

- 2.1. ISO 9001 (2008) §7.5.1 Control of production and service provision

3. Definitions:

- 3.1.

4. Forms:

- 4.1.

5. Scope:

- 5.1. This service instruction applies to all Ventura IG4 door leafs with a lock at the bottom of the door leaf.

6. Material/Tools:

- 6.1. Philips screw driver 5mm
- 6.2. Allen key M6
- 6.3. Prying tool with no sharp edges

Title: Replacing a lock on an IG4 door leaf

7. Execution:

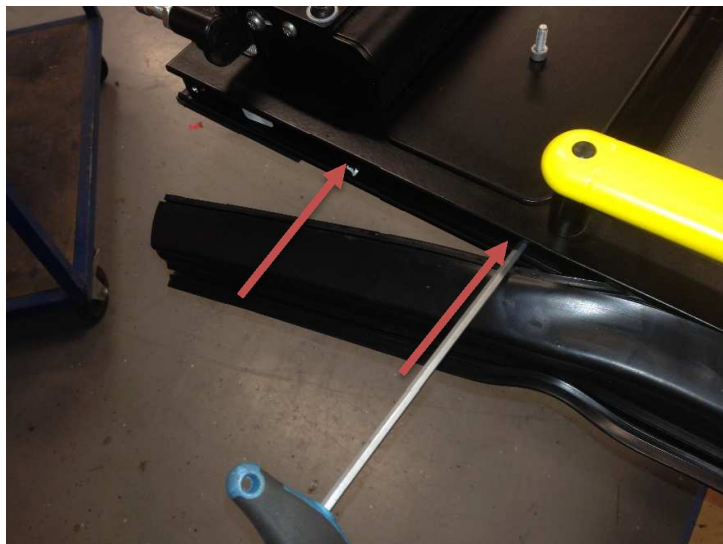
- 7.1. Loosen the screw that holds the rubber to the vertical profile of the door leaf.



- 7.2. Pry the rubber foot out of the aluminium vertical profile from the bottom to the height of the lock cover plate.

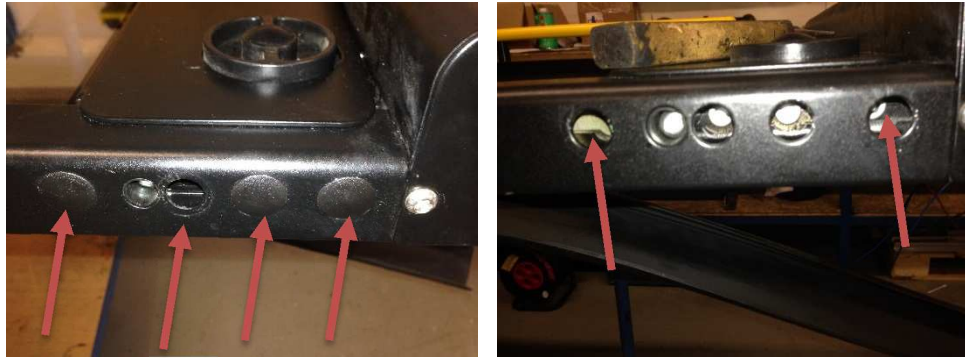


- 7.3. Loosen the two M6 Allen bolts that the lock cover plate to the vertical profile.



Title: Replacing a lock on an IG4 door leaf

- 7.4. Go to the other side of the door leaf and remove the 4 cover caps. Loosen the two M6 Allen bolts that hold the lock cover plate to this side's vertical profile.



- 7.5. Remove the lock cover plate. Be carefully not to damage the paint which is easily damaged when removing the cover plate.

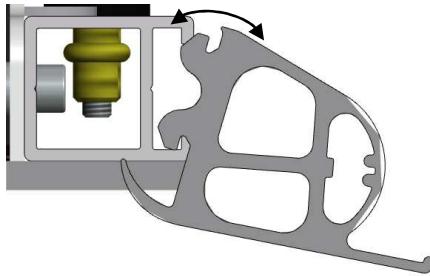


- 7.6. To replace the lock, loosen the two M6 Allen bolts that hold the locking mechanism in place.



Title: Replacing a lock on an IG4 door leaf

- 7.7. After replacing the locking mechanism, put the cover plate back on its original position. Bolt the M6 Allen bolts to its original place and put the cover caps over the bolts.
- 7.8. Fit the rubber back into the aluminium profile. First put bottom part of the foot of the rubber in the vertical profile. Then use a prying tool to press the top part of the foot of the rubber into the vertical profile.



- 7.9. Put the screw back into its original place which secures the rubber to the vertical profile of the door leaf.

