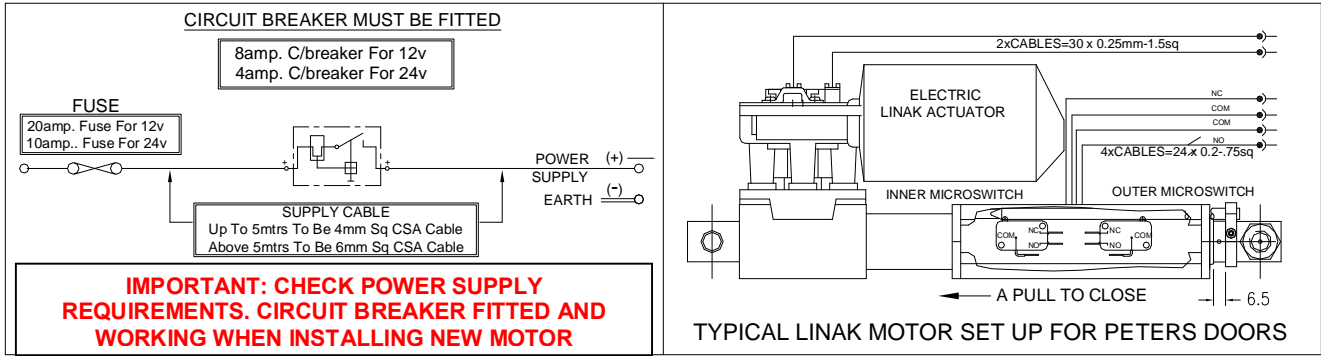


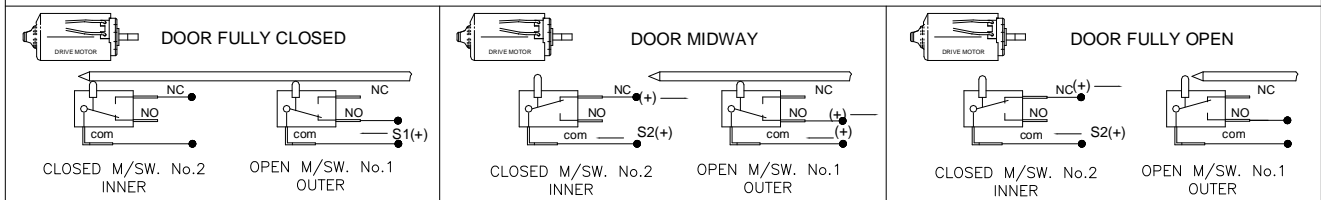
LINAK Electric Control Circuits & Microswitch

GUIDE TO MICRO-SWITCHES SET UP FOR PETERS, DEAN, OVERTON DRIVE UNITS

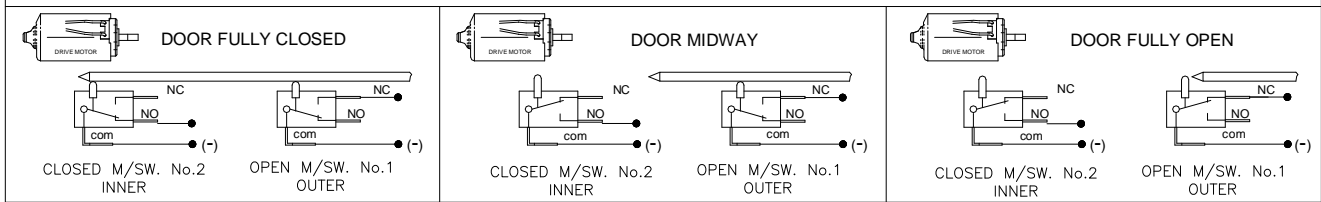


MICRO-SWITCH SET UP'S. ALL SHOWN THE RAM AS A PULL TO CLOSE ACTION
S1= SIGNAL FROM OPEN CONTROL BUTTON. S2= SIGNAL FROM CLOSE CONTROL BUTTON

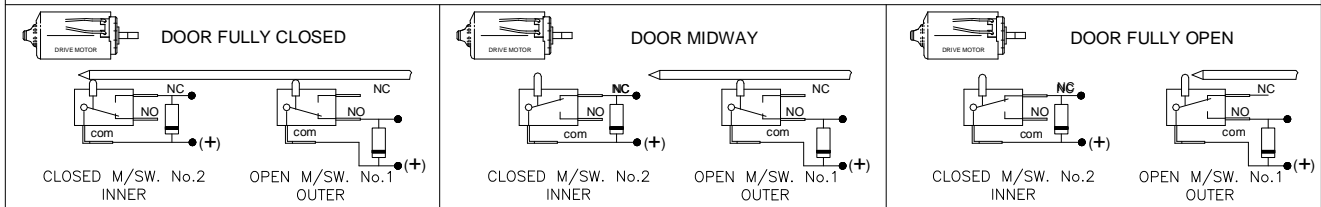
PETERS With a 3-Relay (PCRB) & DEANS With a 2-Relay Systems.



PETERS With a PCD Control Box 216774 System.



DEANS With a PC Control Box Unit System.



MICRO SWITCH
ELE028H



MOTOR
ELE004A=12v
ELE005A=24v



SPINDLE=STROKE
ELE006A=100 Braked
ELE007A=200 None braked
ELE034A=150 None braked



M-SWITCHES + HOUSING
ELE001A=100
ELE002A=200
ELE003A=150



V101903
V101992 BETA

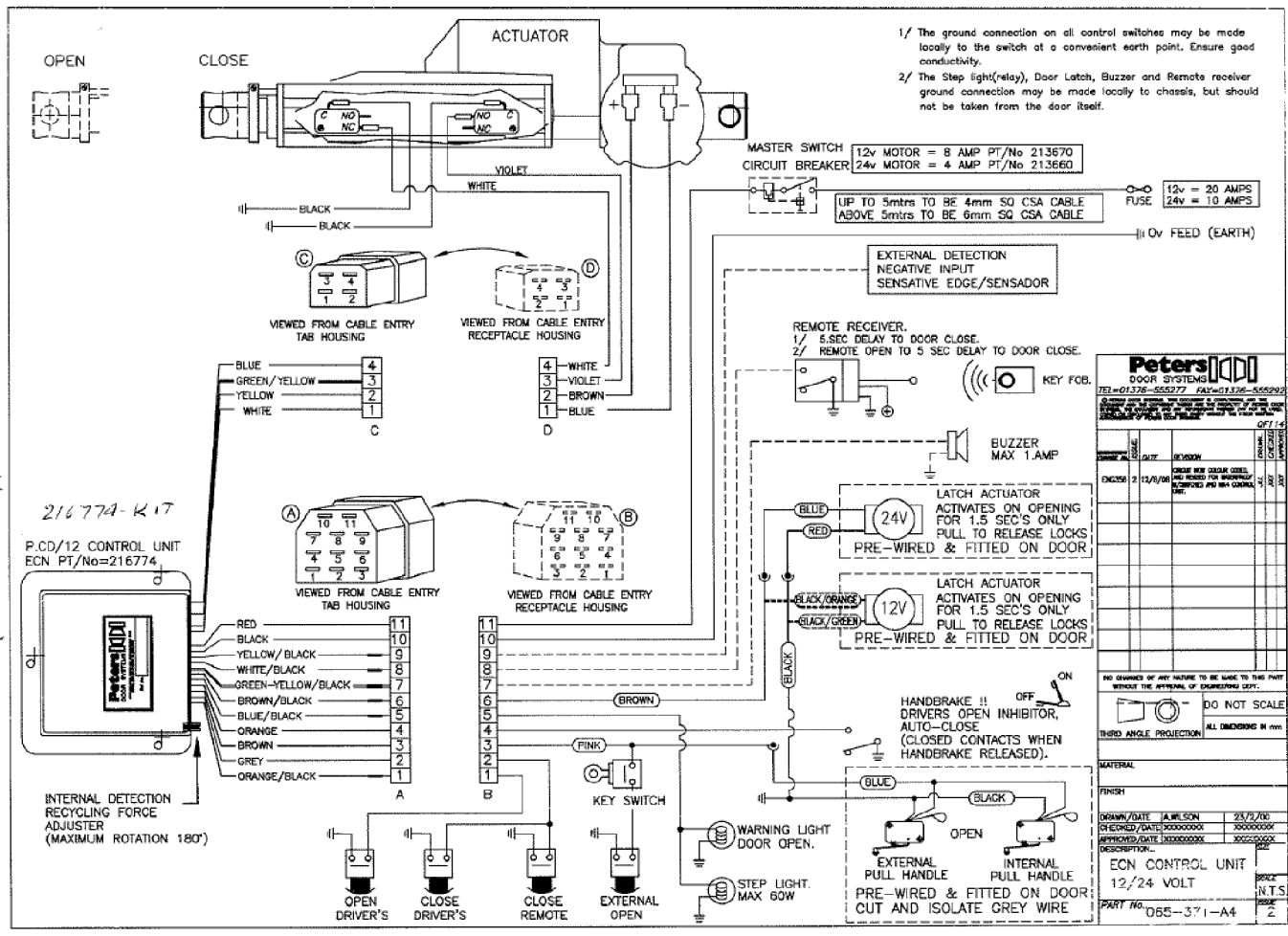
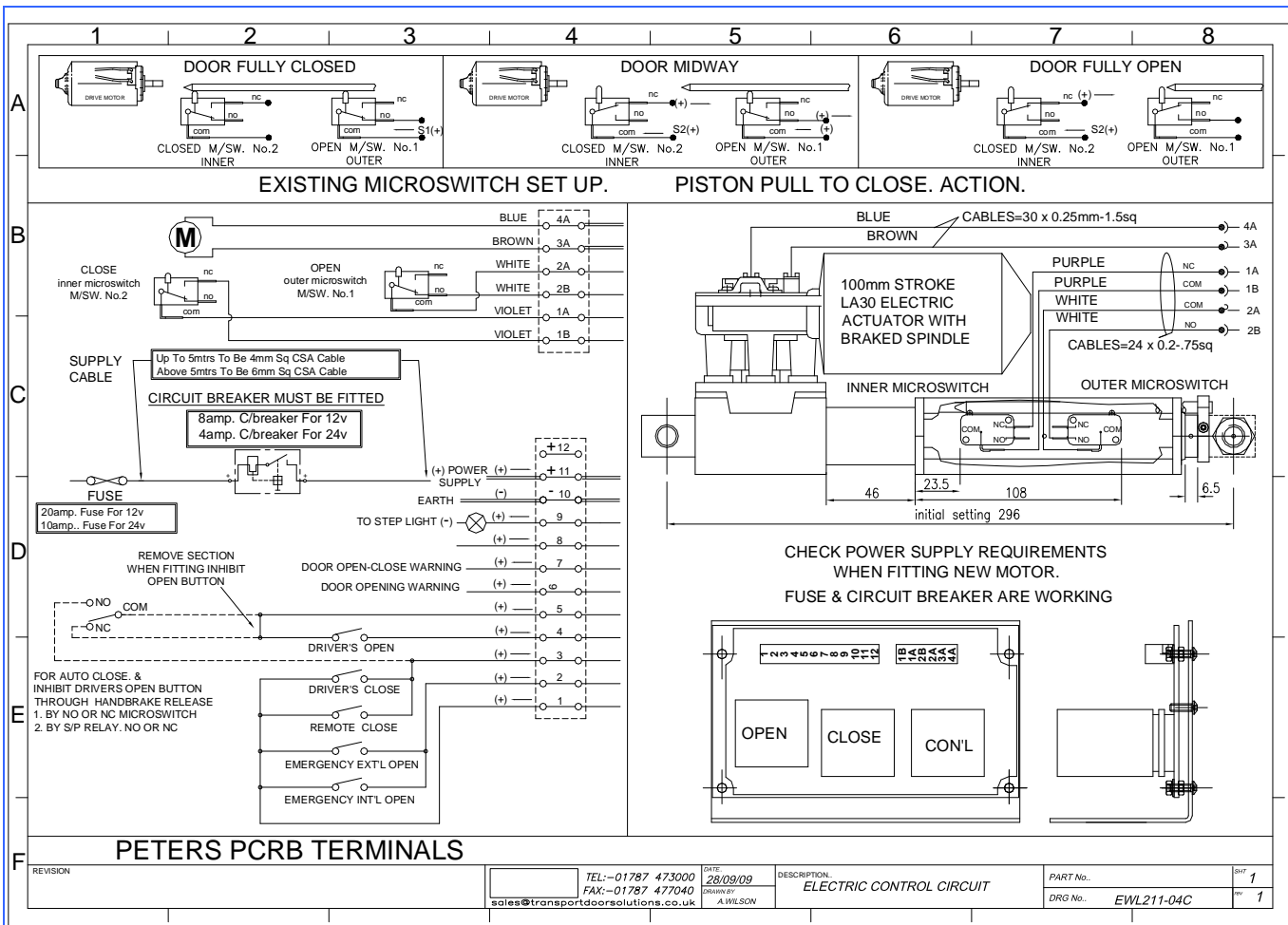


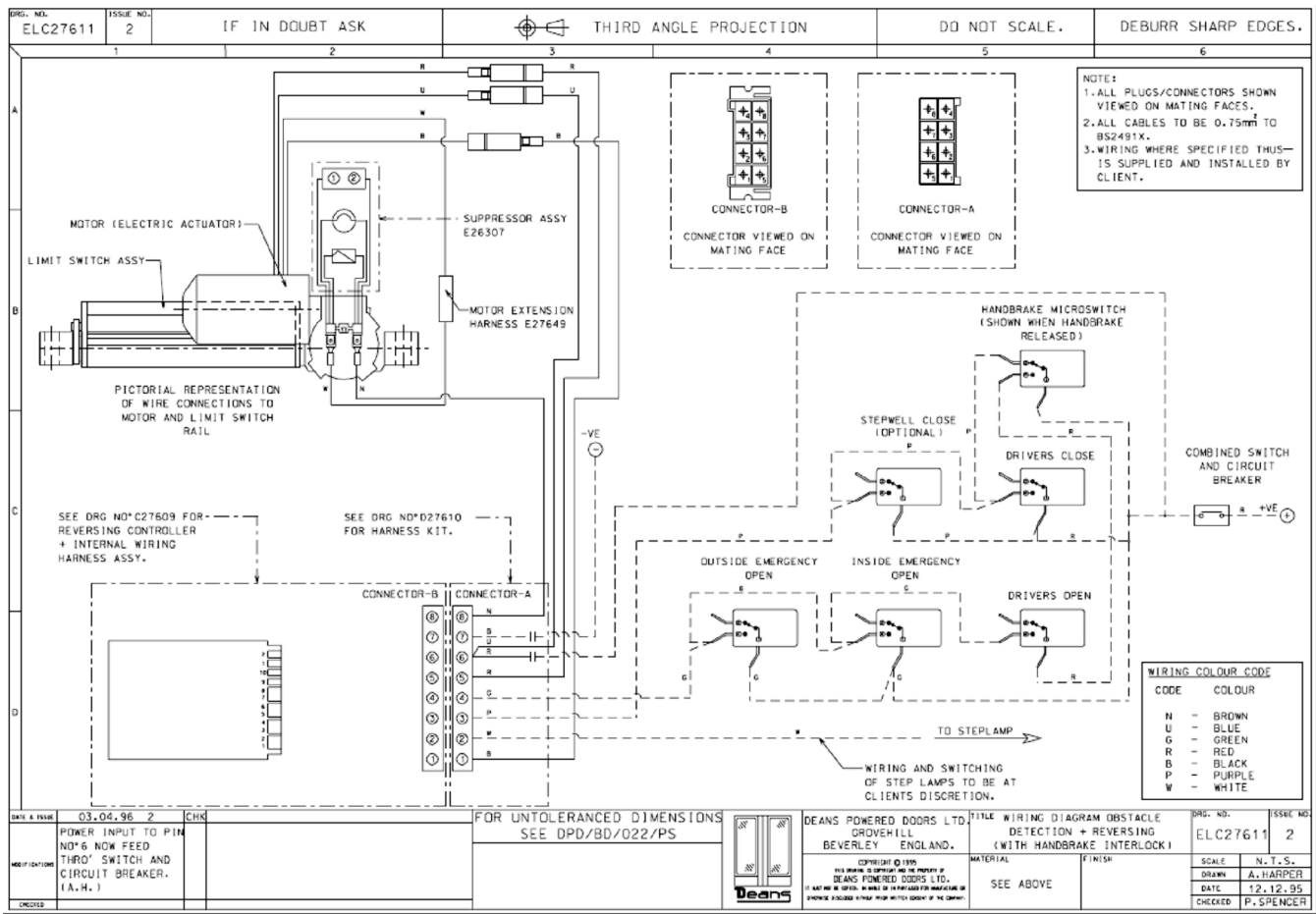
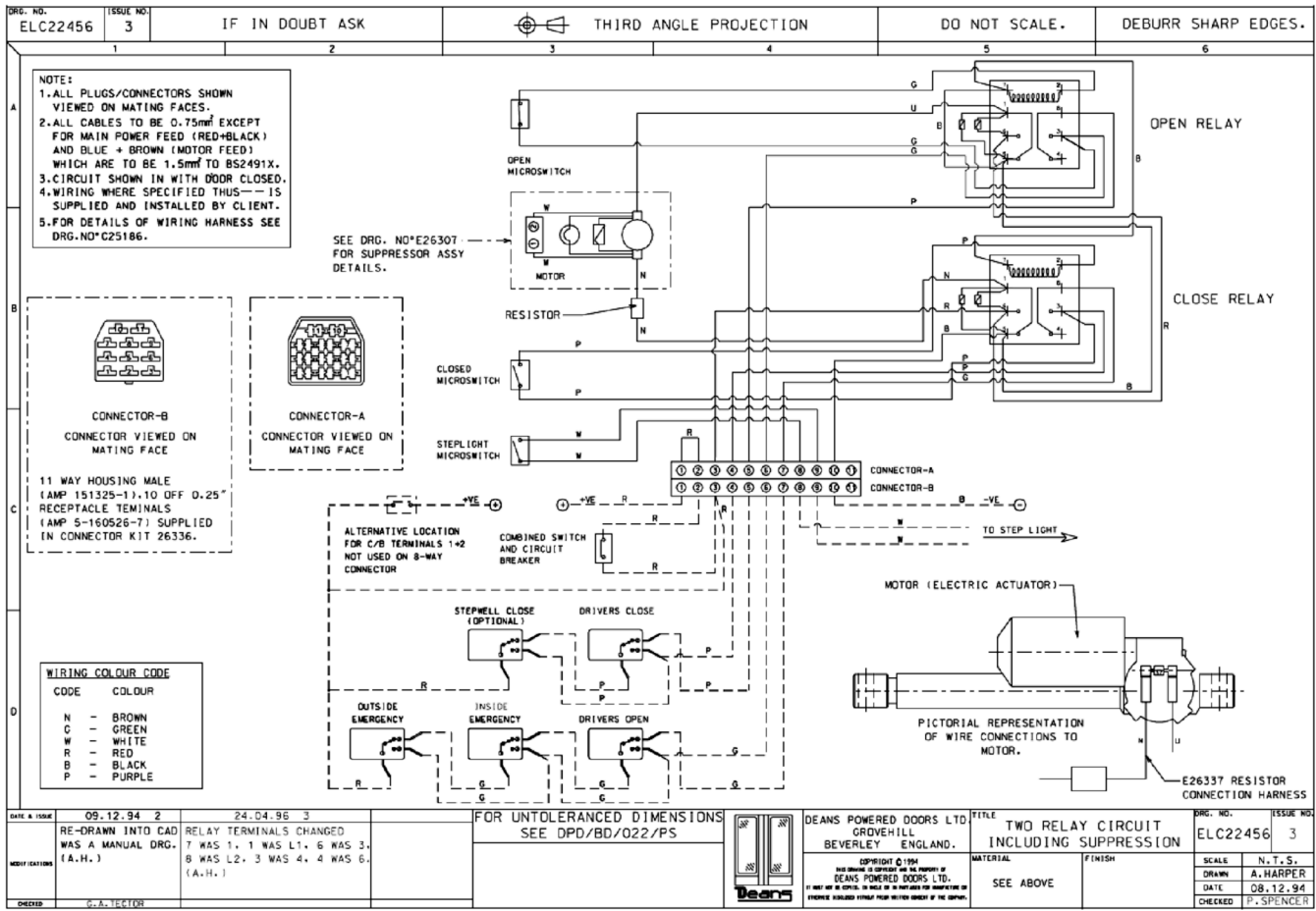
027538



V47945, 047939
V48844

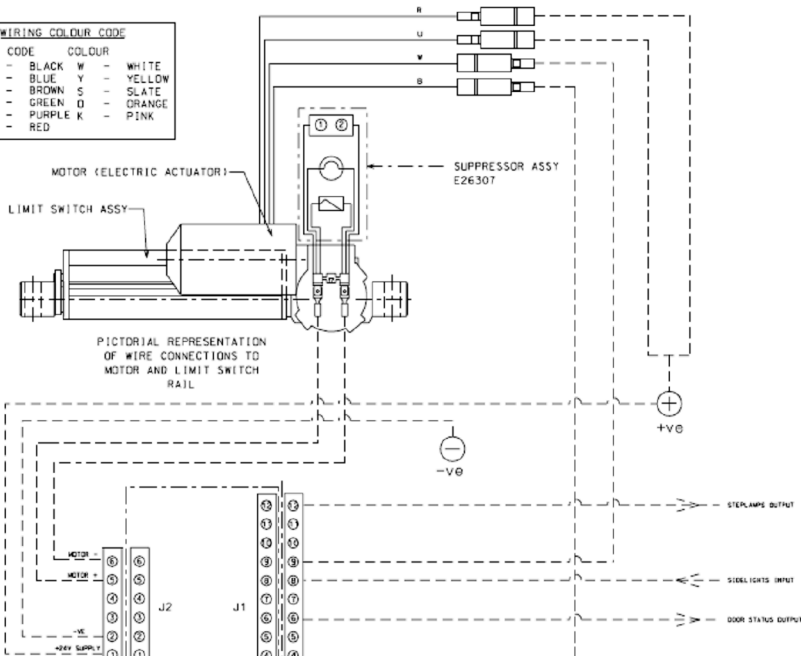
Note for more information on
Deans control units see doc
EWL211-05





WIRING COLOUR CODE

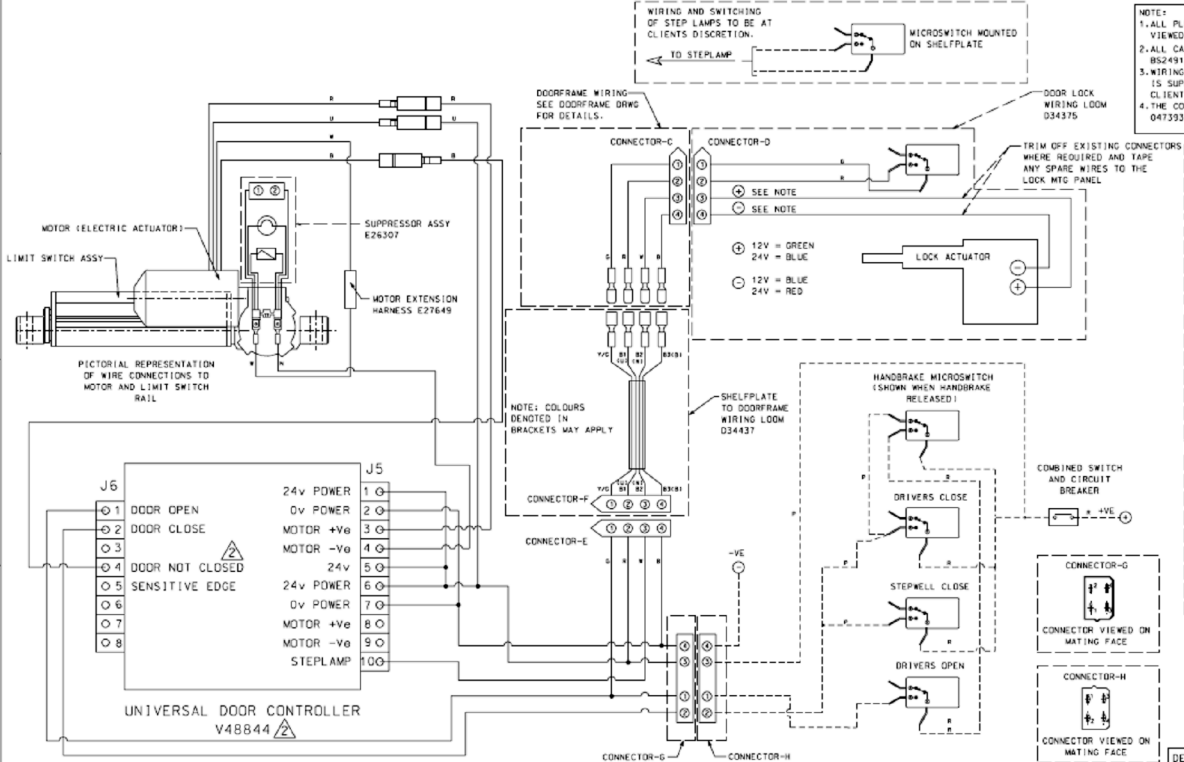
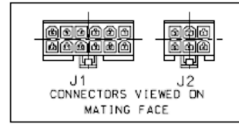
CODE	CLOUR	CODE	CLOUR
B	BLACK	W	WHITE
U	BLUE	Y	YELLOW
N	BROWN	S	SLATE
G	GREEN	O	ORANGE
P	PURPLE	K	PINK
R	RED		



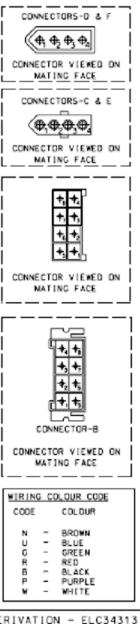
WIRING SCHEDULE

J1		J2	
PIN 1	SENSITIVE EDGE EVENT INPUT	PIN 1	+24V DC SUPPLY
PIN 2	DOOR CLOSE (DRIVERS CONTROL)	PIN 2	-VE
PIN 3	DOOR OPEN (DRIVERS CONTROL)	PIN 3	
PIN 4	DOOR NOT FULLY CLOSED INPUT	PIN 4	
PIN 5		PIN 5	MOTOR +
PIN 6	DOOR STATUS OUTPUT	PIN 6	MOTOR -
PIN 7			
PIN 8	STEPLIGHTS INPUT		
PIN 9	DOOR NOT FULLY OPEN INPUT		
PIN 10			
PIN 11			
PIN 12	STEPLAMP OUTPUT		

NOTE:
 1. ALL PLUGS/CONNECTORS SHOWN VIEWED ON MATING FACES.
 2. ALL CABLES TO BE 0.75mm TO BS2491X.
 3. WIRING WHERE SPECIFIED THIS IS SUPPLIED AND INSTALLED BY CLIENT.

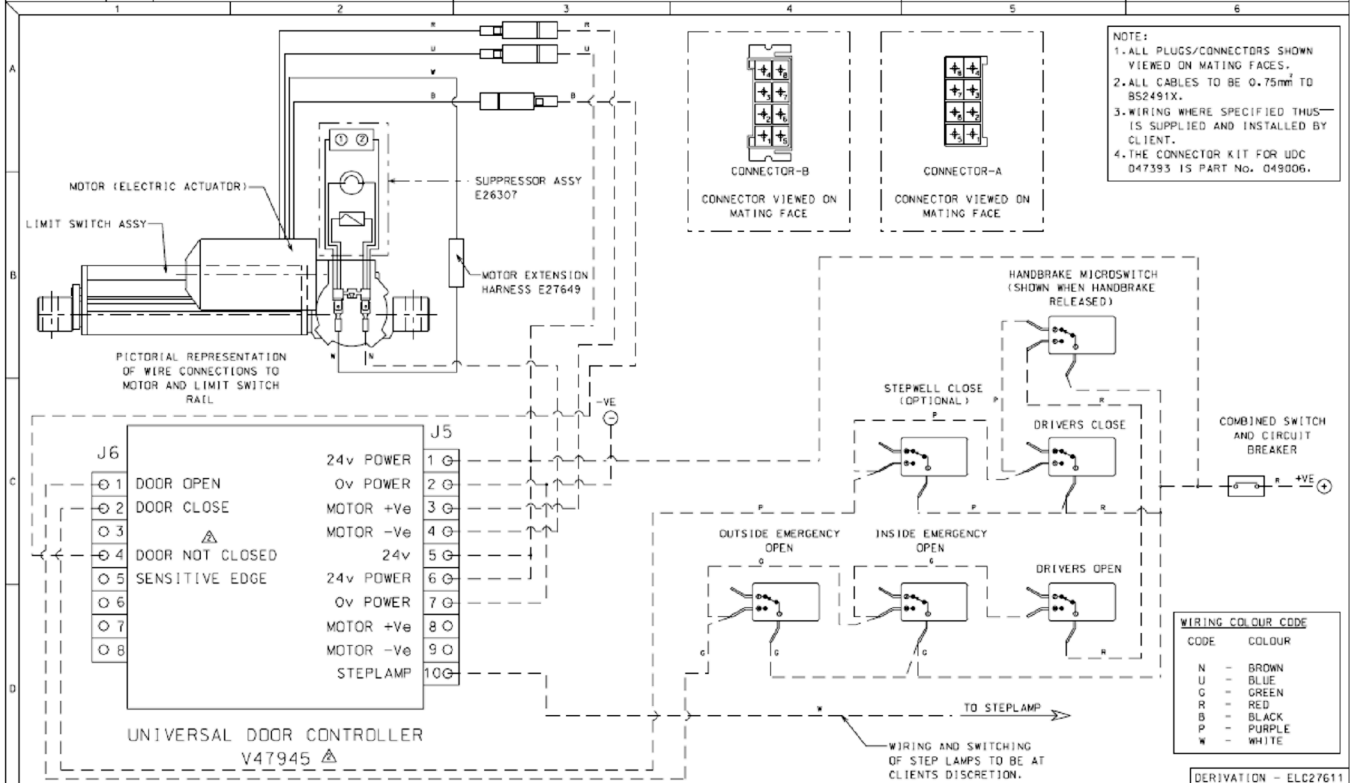


NOTE:
 1. ALL PLUGS/CONNECTORS SHOWN VIEWED ON MATING FACES.
 2. ALL CABLES TO BE 0.75mm TO BS2491X.
 3. WIRING WHERE SPECIFIED THIS IS SUPPLIED AND INSTALLED BY CLIENT.
 4. THE CONNECTOR KIT FOR UDC 047393 IS PART NO. 049006.

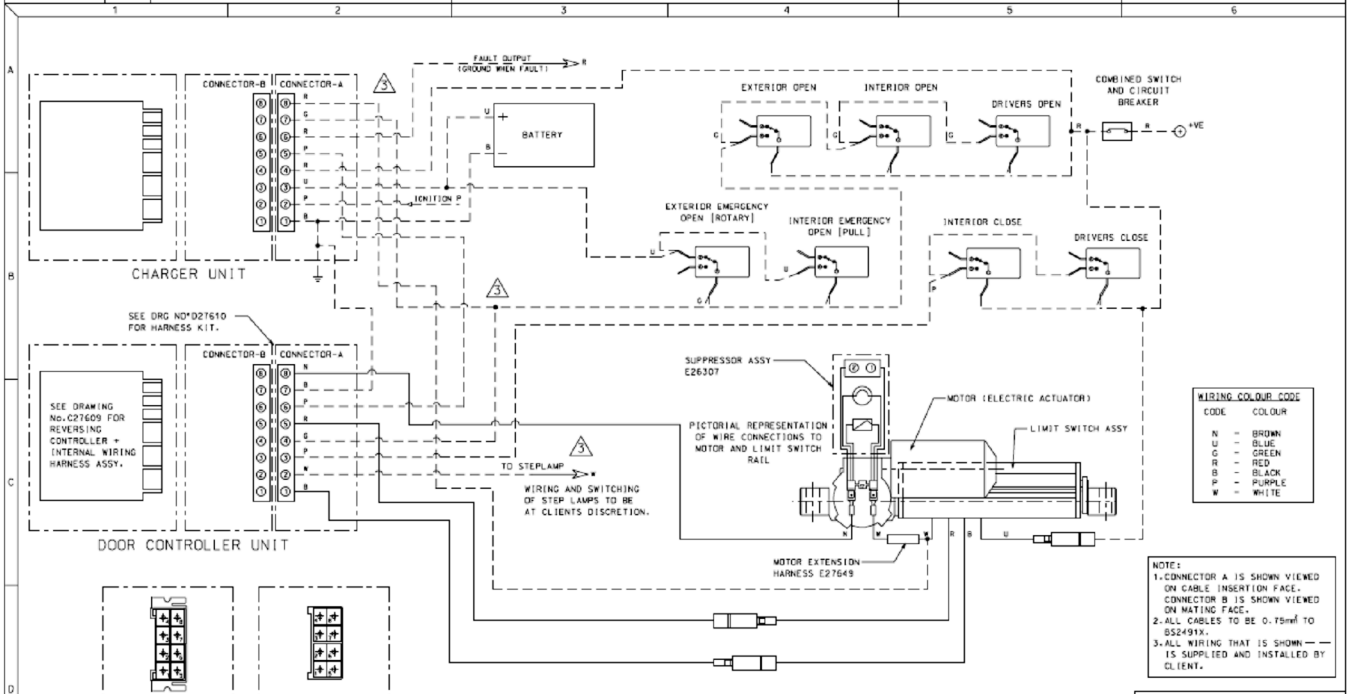


WIRING COLOUR CODE

CODE	CLOUR
N	BROWN
U	BLUE
G	GREEN
R	RED
B	BLACK
P	PURPLE
W	WHITE



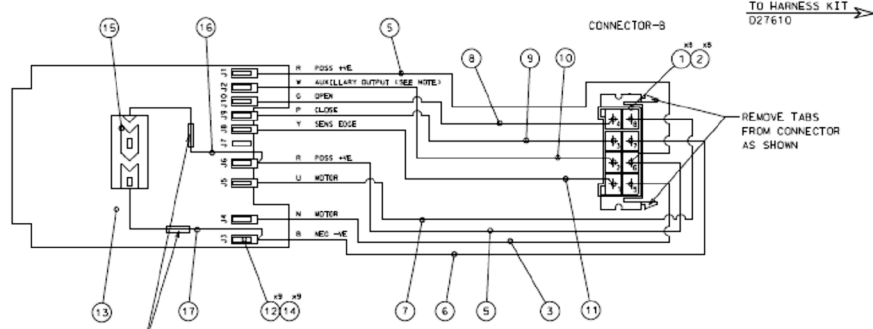
DATE & ISSUE	25.03.04 '2'	GENERAL TOLERANCES IN ACCORDANCE WITH ISO 2768-G	TITLE	WIRING DIAGRAM [UDC]	DWG. NO.	ELC49005	ISSUE NO.	2
MODIFICATION	DDOR NOT CLOSED READ DDOR CLOSED. V47945 READ 047939.	DEANS POWERED DOORS	MATERIAL		SCALE	N.T.S.	DRAWN	N MAWER
CHECKED	N HARRISON		FINISH		DATE	29.08.03	CHECKED	N HARRISON



DATE & ISSUE	31.08.01 '2'	24.09.01 '3'	GENERAL TOLERANCES IN ACCORDANCE WITH ISO 2768-G	TITLE	WIRING DIAGRAM [WITH BATTERY BACK-UP]	DWG. NO.	ELC43998	ISSUE NO.	3
MODIFICATION	DRAWING UPDATED TO SUIT INTERIM CHARGING UNIT.	DRAWING UPDATED TO SUIT NEW CHARGING UNIT CONNECTOR	DEANS POWERED DOORS	MATERIAL	SEE ABOVE	SCALE	N.T.S.	DRAWN	N MAWER
CHECKED	C NORTH	C NORTH		FINISH		DATE	20.08.01	CHECKED	C NORTH

NOTE:
 1. ALL PLUGS/CONNECTORS SHOWN VIEWED ON MATING FACES.
 2. ASSEMBLIES TO BE CLEARLY IDENTIFIED AND SERIALISED IN MANUFACTURE.
 3. ALL CABLES TO BE 0.75mm² PVC INSULATED TO BS2491X.
 4. FOR DETAILS OF WIRING DIAGRAM SEE DRG. NO. ELC27611/ELC27612.

NOTE:
 1. NOTE TO BE ENCLOSED WITH EACH CONTROLLER TO STATE THAT THE UNIT IS TO BE POSITIVELY SWITCHED. ANY ATTEMPT TO NEGATIVELY SWITCH THE UNIT WILL CAUSE A FAILURE.



THESE TWO WIRES TO BE SOLDERED TO CAPACITOR WIRES TO EXTEND THEM TO BE 75mm LONG AND THEN PROTECTED WITH A RUBBER SLEEVING. (NOTE ORIENTATION OF CAPACITOR).

WIRING COLOUR CODE

CODE	COLOUR
B	BLACK
U	BLUE
N	BROWN
G	GREEN
P	PURPLE
R	RED
W	WHITE

NOTE:
 1. WHITE WIRE (J2) REPRESENTS STEP LAMP SWITCHING/DOOR LATCH RELEASE.

ITEM	PART NO*	QTY	DESCRIPTION
17		1	CABLE BLACK PVC 0.75mm ² -24/0.2 STRAND TO BS2491X
16		1	CABLE RED PVC 0.75mm ² -24/0.2 STRAND TO BS2491X
15	027768	1	CAPACITOR 63V DC 1000UF (FARNELL 294-6T6)
14	027653	9	0.25" RECEPTACLE FLAG TERMINALS (AMP 180430-2.1)
13	SEE BDM	1	PWM REVERSING CONTROL UNIT (12/24VOLT)
12	027654	9	0.25" FLAG RECEPTACLE BOOT (AMP 180904)
11		1	CABLE YELLOW PVC 0.75mm ² -24/0.2 STRAND TO BS2491X
10		1	CABLE WHITE PVC 0.75mm ² -24/0.2 STRAND TO BS2491X
9		1	CABLE PURPLE PVC 0.75mm ² -24/0.2 STRAND TO BS2491X
8		1	CABLE GREEN PVC 0.75mm ² -24/0.2 STRAND TO BS2491X
7		1	CABLE BLUE PVC 0.75mm ² -24/0.2 STRAND TO BS2491X
6		1	CABLE BLACK PVC 0.75mm ² -24/0.2 STRAND TO BS2491X
5		2	CABLE RED PVC 0.75mm ² -24/0.2 STRAND TO BS2491X
4	027545	A/R	NYLON CABLE TIES 120mm LG
3		1	CABLE BROWN PVC 0.75mm ² -24/0.2 STRAND TO BS2491X
2	027564	8	0.25" TAB TERMINAL (AMP 60254-2)
1	027577	1	8 WAY HOUSING FEMALE (AMP 280430-0)

DATE & VALUE	09.01.96 2	04.08.98 3	FOR UNTOLERANCED DIMENSIONS SEE DPD/BD/022/PS	DEANS POWERED DOORS LTD GROVEHILL BEVERLEY ENGLAND.	TITLE WIRING HARNESS (PWM REVERSING CONTROL UNIT)	DRG. NO. C27609	ISSUE NO. 3
REVISION	ITEMS 15-16 AND 17 AND CAPACITOR NOTE ADDED. (A.H.)	AUXILLARY OUTPUT DID READ STEP LAMP; NOTE ADDED (D.W)		DEANS POWERED DOORS LTD GROVEHILL BEVERLEY ENGLAND.	MATERIAL SEE ABOVE	SCALE NTS	CHECKED A. COVERDALE
DATE	12.12.95						