

**Title: Replacement of bearing bush PS and RS door system**

**1. Purpose:**

This service manual describes how to replace a bearing bush inside the door shaft.

**2. References:**

2.1. ISO 9001 (2008) §7.5.1 Control of production an service provision

**3. Definitions:**

3.1. None

**4. Forms:**

4.1. None

**5. Scope:**

5.1. This work instruction applies to all Ventura PS and RS door systems where Bearing Bush B689 is used inside the door shaft

**6. Material/Tools:**

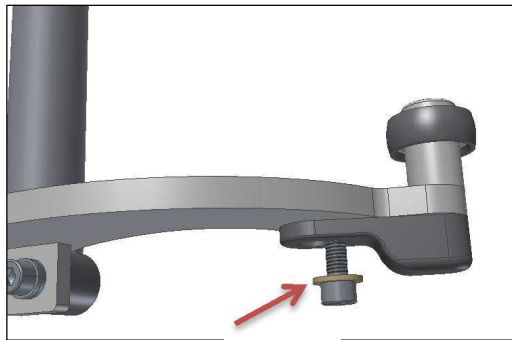
- 6.1. Bearing bush B689
- 6.2. 2 Spanners 13mm *(for PS Systems)*
- 6.3. Ratchet with socket 13mm *(for RS Systems)*
- 6.4. Plastic hammer
- 6.5. Alan key 5mm *(for PS Systems)*
- 6.6. Ratchet with socket 17mm *(for RS Systems)*

Revision no.	Date:	Description of the change:	Name & function:
1	29-04-2014	First release	Menno Coehoorn Service Engineer

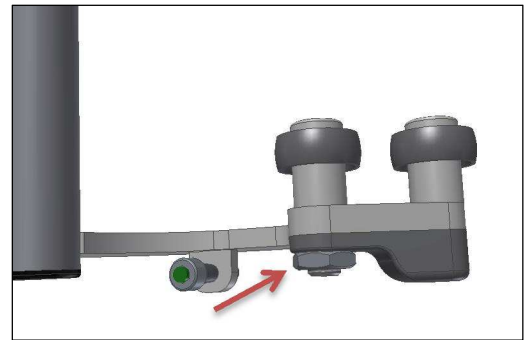
## Title: Replacement of bearing bush PS and RS door system

### 7. Execution:

- 7.1. Remove air pressure from door system with emergency switch or filter regulator.
- 7.2. Remove the lever block from bottom lever.

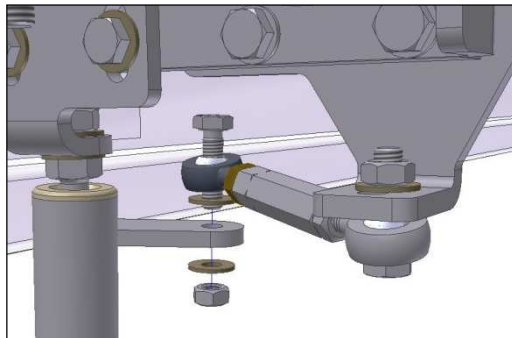


Plug Slide door: Alan key 5mm

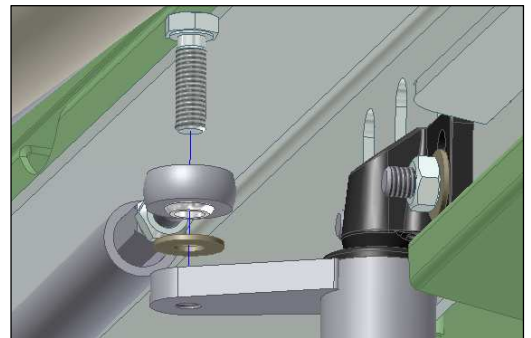


Rapid Slide door: Spanner 17mm

- 7.3. Open the doors by hand.
- 7.4. Disconnect the connecting rod from the door shaft upper lever.



Plug Slide Door



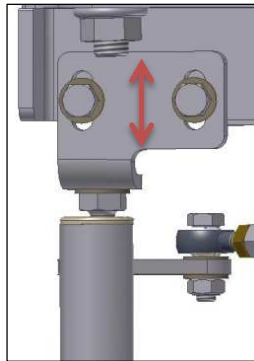
Rapid Slide Door

- 7.5. Loosen the bolts from the bottom support. The type of bolt can vary per bus manufacturer.
- 7.6. Take out the door shaft.
- 7.7. Remove the edge of the bush and any loose parts inside the door shaft. The bush inside is intact it does not need to be removed because the new bush will push it further inside.

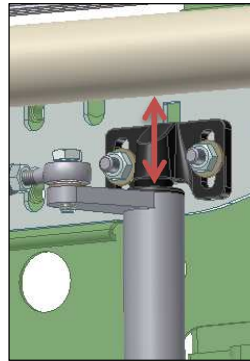


**Title: Replacement of bearing bush PS and RS door system**

- 7.8. Place the new bearing bush on the hole of the shaft and use the plastic hammer to get the bush inside the shaft.
- 7.9. Clean the pivot bolt on the bottom support and mechanism and apply grease. *Multi-purpose grease (Advice: Q8 Rembrandt Ep-2, or equivalent)*
- 7.10. Place the door shaft back and mount the bottom support.
- 7.11. Mount the lever block back to the bottom lever.
- 7.12. Check if there is no axial play in door shaft. To adjust the brackets use spanner 13 or the ratchet with socket 13mm.



Plug Slide Door



Rapid Slide Door

- 7.13. Check if all the bolts/nuts are tightened.
- 7.14. Open and close the door by hand and check if the system moves without any obstruction.
- 7.15. Pressurize the system to 7-9 bar.