

DOOR MANUAL: INST-103-05 PART 2 of 2
RH GLIDER ENTRANCE ELECTRIC DOOR SYSTEM
for TREKA-16/24 DDA

- **SPARE PARTS IMAGES**
- **PRE-ASSY & CABLE LOOMS**
- **SHELFPLATE ASSEMBLY DATA**
- **ENTRANCE DOOR ASSEMBLY DATA**
- **TYPICAL TOOL REQUIREMENTS & STD TORQUE SETTINGS**
- **TDS SERVICE ENGINEER REQUEST SHEET**



43 Broton Drive, Halstead, Essex, CO9 1HB.
Email: sales@transportdoorsolutions.co.uk

Tel: 01787 473000 Fax: 01787 477040
www.transportdoorsolutions.co.uk

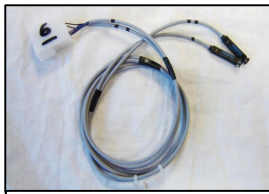
SPARE PARTS IMAGES



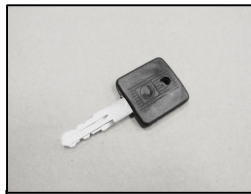
FULL PRODUCTION ASSEMBLY FITTINGS/FIXINGS AVAILABLE ON REQUEST FOR SPARE PARTS



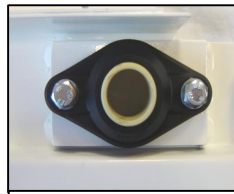
RH HANDRAIL.
HRL025-YEL1021



NC. REED SWITCH ASSY.
EWL212-03



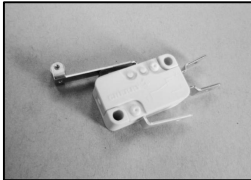
SPARE KEY.
LCK100A



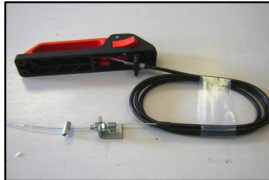
SPH FLANGE BRG.
BRG022B



LOCK HANDLE KIT.
HDL007T-J2



MICROSWITCH.
ELE099



EMERG&Y HANDLE ASSY.
HDL003T-002



EMERG&Y HANDLE.
HDL003A



INNER CABLE 1.5x2mtrs
LCK302-2000



PULL HANDLE.
HDL001A



GUIDE SHOE.
GDE001



EXT& OPEN BUTTON
BUT046-ASY



INT& CLOSE BUTTON
BUT010-ASY



INT& EMRG&Y OPEN
BUT012-ASY



SPH ROD END
BRG007B



UPPER GUIDE SPINDLE
ASY003B



LOWER GUIDE SPINDLE
ASY017T



LOWER BRG ASSY.
L500-09-ASSY-01



UPPER BRG ASSY.
L500-05-ASSY-01



R66 CRANK ARM
CRK002A



HORZ BRUSH ASSY
BSA3807-740-01



DOORGUIDE BRACKET
BRK002-01



RH LEADING FLAP ASY
ATF1-244-25



RH TRAILING FLAP ASY
ATF1-380-25



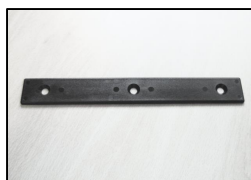
BOTTOM BEARING
ASY006B



CLUTCH PIN
PP004-CH



100mm SLIDE CLUTCH ARM
ASSY= ASY200T-01



DOOR ARM SLIDE RAILS
L500-51-192



TRIM RUBBER END
STOP STP011



CLUTCH SPRING
SPG003A

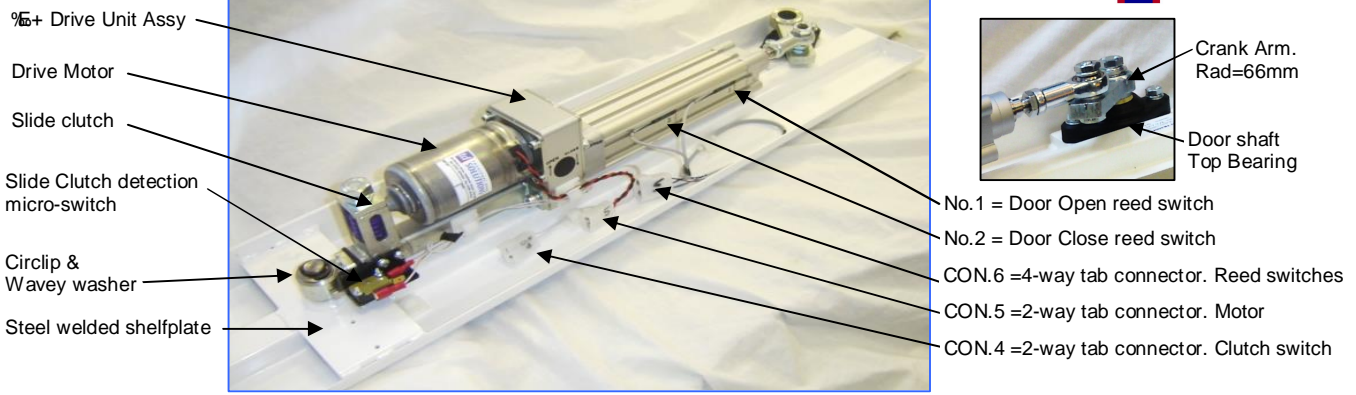


DOOR NOSING RUBBER
RUB006A



PORTAL RUBBER SEAL
RUB011A

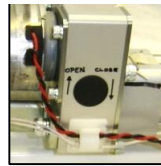
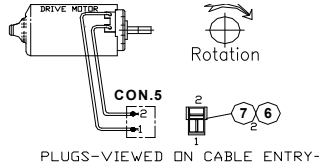
SHELFPLATE ASSEMBLY DATA



Part No/Code	Description	
CYL050-12-02	12V %E+DRIVE 100STR UNIT ASSY =CLUTCH, R/SWS, M/SW	
CYL050-24-02	24V %E+DRIVE 100STR UNIT ASSY = CLUTCH, R/SWS, M/SW	
ELE031T-01	12V DRIVE MOTOR ASSY	INST-014-08
ELE025T-01	24V DRIVE MOTOR ASSY	INST-014-09
ASY201T	SLIDE CLUTCH STD (PURPLE) 100mm STR	INST-014-06

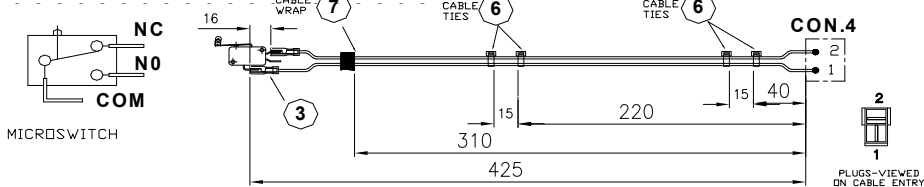
ELE031T-01= 12v DRIVE MOTOR PRE-ASSY & CABLE LOOM

ELE025T-01= 24v DRIVE MOTOR PRE-ASSY & CABLE LOOM

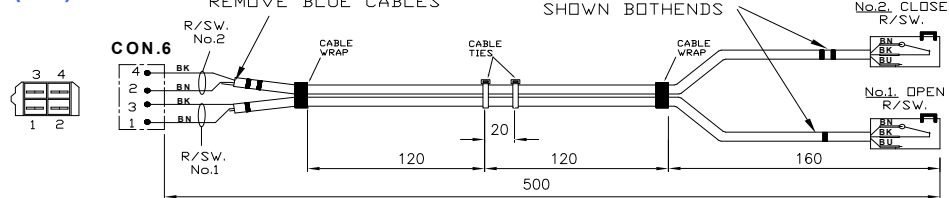
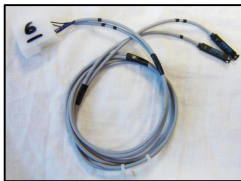


Manual operation of Drive Unit.
Only when Plug.5 is disconnected.
See instruction label on side of motor.

EWL212-01= SLIDE CLUTCH DETECTION SWITCH KIT LOOM

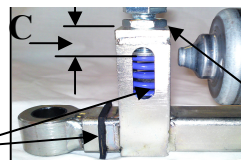


EWL212-03= REED SWITCH (NC.) LOOM



ASY201T= 100str SLIDE CLUTCH (PURPLE SPRING) ASSY

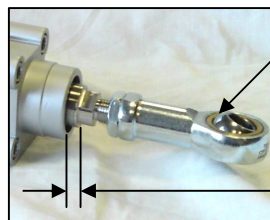
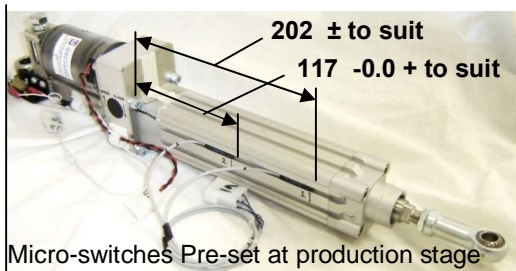
(INST-014-06= SLIDE CLUTCH ASSEMBLE INSTRUCTIONS)



UTCH.
factory. Release locking nut, compress or release to suit
operation, over-ride or door retaining force of 150N
NOTE: # = Clutch is in the fully engaged position.
%E+Electric drive =15mm +1.5 -0.0
%E+Manual drive= 11mm +/- 1.0

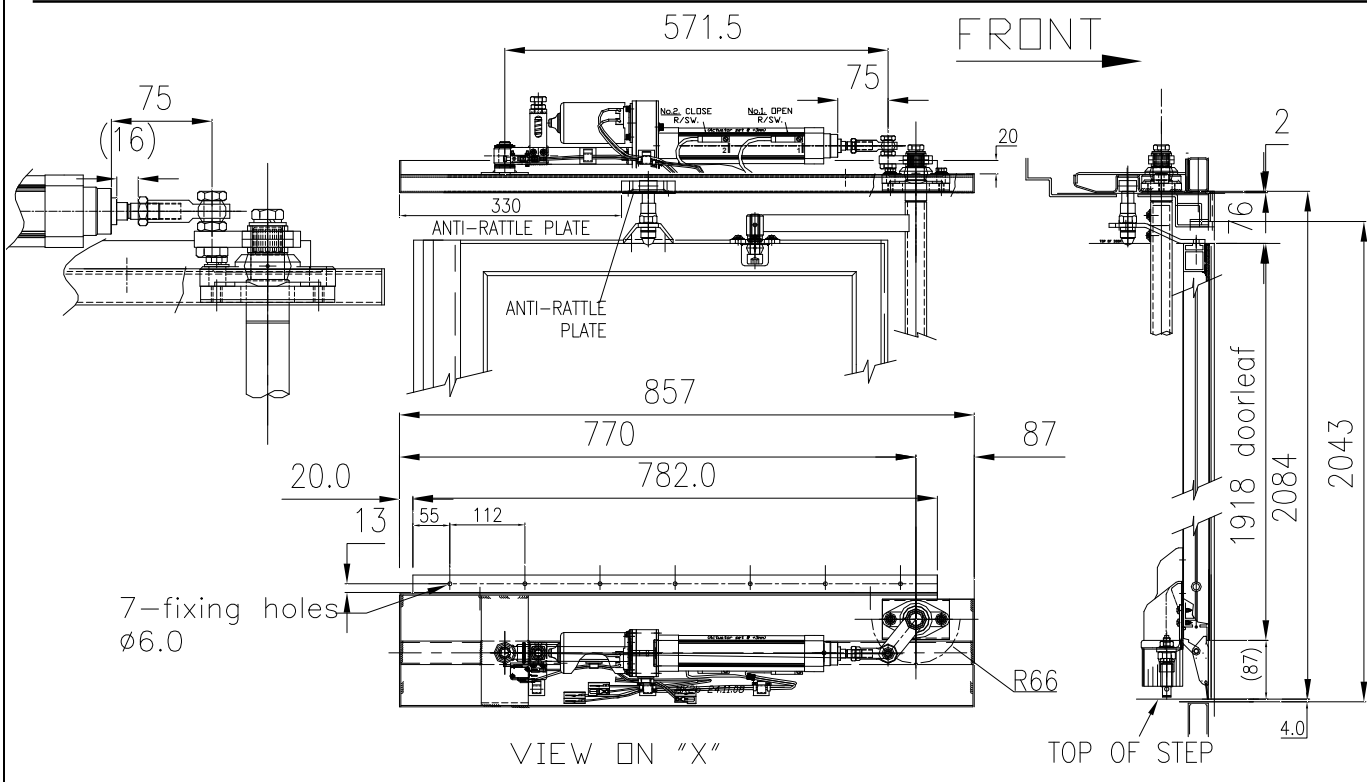
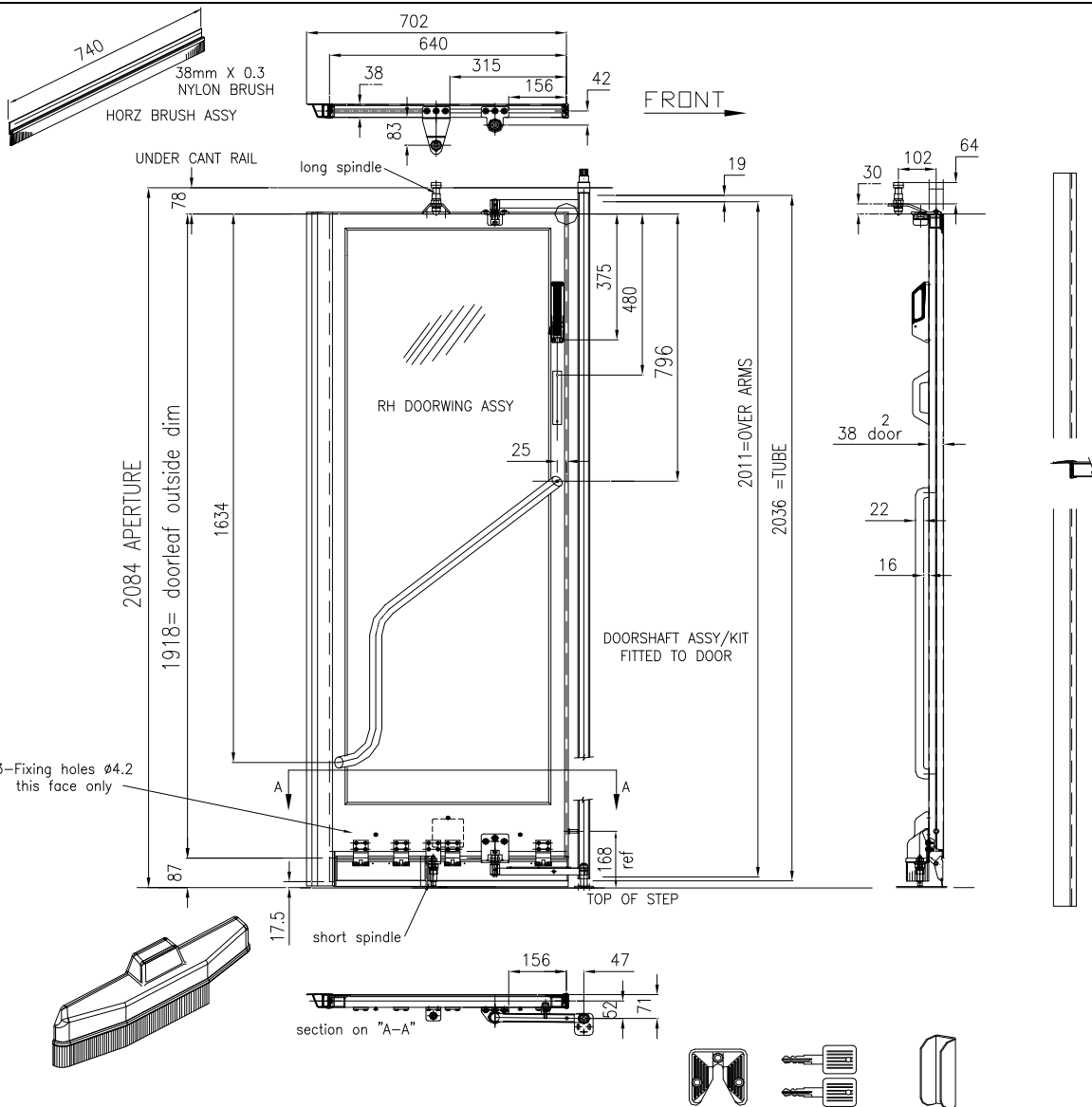
CYL050-12-02= 12V "E" DRIVE 100str UNIT ASSY +CLUTCH,R/SWS & M/SW

CYL050-24-02= 24V "E" DRIVE 100str UNIT ASSY +CLUTCH,R/SWS & M/SW



M12 x 1.25 ROD END
For adjustment lift off rod end from crank arm spindle with door in open position.
Release lock nut, then rotate rod end to suit.
DO NOT ROTATE "E" DRIVE PISTON

5mm minimum
When door is fully closed



No	PART No	DESCRIPTION	QTY-PER LEAF
1	L500-60-04	RH DOORSHAFT W/ASSY P/C MERC WHITE. R3	1
2	ASY006A	25mm BOTTOM BEARING ASSY	1
3	L500-09	LOWER SPH BRG BRACKET	1
4	L500-51-192	RH SLIDE RAIL 192 x 76p	1
5	STP010	ATF STRIKER BLACK	1
6	SCR31460-A2	M14x60 SDC HD SCREW-BZP	2
7	SCR11225-A1	M12x25 HEX HD SCREW-BZP	1
8	SCR30820-A1	M8x20 SDC HD SCREW-BZP	1
9	SCR90606-C1	M6x6 GRUB SCREW *C*POINT-BZP	2
10	SCR50508-A1	M5x8 CSK SDC HD SCREW-BZP	3
11	WAS12SP-B1	M12 WASHER SPRING RECT-BZP	1
12	WAS12PL-C1	M12 WASHER PLAIN FORM-C-BZP(2.5thk)	1
13			
14	CJR001	CIRCLIP 1300/34mm	1
15	BRG021B	14 SPH MOULDED BRG RACE	1
16	PLG002	PLASTIC PLUG SHORT TYPE	1
17	SPA005-04	SPACER 4mm THK D/D20 1/D14	1

INSTALLATION NOTES:-

- ITEM-19 TO BE SECURED OVER M8 SOC SCREW ITEM-10 WITH LOCTITE-4062.
- GREASE INTERNAL PARTS PRIOR TO FITTING = (G)
- USE JIG-002 TO INSERT SPH BRG ITEM-18.
- M14 THREADS IN END COLLARS TO BE FREE RUNNING MAY HAVE TO CLEAN OUT AFTER POWDER COATING.
- M5 CSK SCREWS ITEM-12 RETAINING SLIDE RAIL MUST FINISH BELOW SURFACE.
- RETAIN ITEM-3 BOTTOM BEARING IN SHAFT BY MEANS OF A PLASTIC TIE WRAP

USED ON:- GLD002=U.V.M. TREKA 16 RH
GLD042=U.V.M. TREKA DVA 16 RH

REV.5 23/05/2013 item 20 move to underside of bottom bearing assy	TOLERANCES ON DIMENSIONS: (Unless Otherwise Stated). DIMENSIONS OVER 1000, ±1. DIMENSIONS OF WHOLE NUMBERS ONLY, ±1.0 DIMENSIONS TO 1 DECIMAL PLACE, ±0.5. ANGLES, ±1° CHAMFERS, ±3°	ALL DIMENSIONS IN MM / INCHES SCALE: NTS DRAWN BY: A.WILSON DATE: 08.02.07 sales@transportdoorsolutions.co.uk	IF IN DOUBT ASK DO NOT SCALE 3rd ANGLE	REMOVE ALL BURRS AND SHARP EDGES	CUSTOMER...: CUST SPEC...: VEHICLE...:-- NOTES...:---	DESCRIPTION: RH DOORSHAFT & DRIVE SHAFT ASSY DETAILS KIT PT/No SHFT003-04 SHF 1 DRG No. INST-006-02 REV 5
--	---	--	---	--	--	---

REV.5 23/05/2013 item 20 move to underside of bottom bearing assy	TOLERANCES ON DIMENSIONS: (Unless Otherwise Stated). DIMENSIONS OVER 1000, ±1. DIMENSIONS OF WHOLE NUMBERS ONLY, ±1.0 DIMENSIONS TO 1 DECIMAL PLACE, ±0.5. ANGLES, ±1° CHAMFERS, ±3°	ALL DIMENSIONS IN MM / INCHES SCALE: NTS DRAWN BY: A.WILSON DATE: 08.02.07 sales@transportdoorsolutions.co.uk	IF IN DOUBT ASK DO NOT SCALE 3rd ANGLE	REMOVE ALL BURRS AND SHARP EDGES	CUSTOMER...: CUST SPEC...: VEHICLE...:-- NOTES...:---	DESCRIPTION: RH DOUBLE ACTIVE FLAP INSTALLATION DETAILS DOOR KIT No SHFT 1 DRG No. INST-012-06 REV 1
--	---	--	---	--	--	--

TYPICAL TOOL REQUIREMENTS & STANDARD TORQUE SETTINGS



SPANNERS	ALLEN KEYS
Open & Closed Ended	Hex & Ball Nose Ends
24, 23, 22, 19, 17, 16, 13,12, 10, 8, 7, 4, mm A/F	1.5, 2.0, 2.5, 3.0, 4.0, 5.0, 6.0, 8.0, 12. mm A/F
Adjustable Spanner	Tee Bar Type
Up To 25mm Opening S-M-L	3.0, 4.0, 5.0, 6.0, 8.0.
Sockets	



“SCREW DRIVERS BITS”	MISCELLANEOUS
4mm Flat Blade Screwdrivers (S-M-L)	Internal & External Circlip Pliers
No.PZ2 Pozzi-Drive Screwdriver	Pliers flat & tapered ends
No.PZ2 Pozzi-Drive Bit	Stanley Knife
No.PZ3 Pozzi-Drive Bit	Scissors
	Hammer small Combination type



NUT TIGHTENING TORQUE	
M6	7 Nm
M8	17 Nm
M10	36 Nm
M12	55 Nm
M14	80 Nm
M16	120 Nm

BOLT / SCREW TIGHTENING TORQUE	
M6	12 Nm
M8	25 Nm
M10	52 Nm
M12	94 Nm
M16	90 Nm
M20	150 Nm

TDS Service Engineer Request Sheet



Report Number : **SER** Allocated by TDS

Operator:	_____	Date:	_____
Location:	_____	Contact Name:	_____
		Tel. No:	_____
Vehicle Type:	_____	Fleet/Body No:	_____
Reg No:	_____	Mileage:	_____
Warranty/ Chargeable?	_____	Customer Order No/Warranty Ref:	_____

OFFICE USE ONLY

Nature Of Problem:

Cause:

Corrective Action Taken:

Parts Used:

	Site time:		Hrs:		TDS Stock Issued	Yes/no
	Travel time:		Hrs:		Service Agent Stock Issued	Yes/no
	Total time:		Hrs:		Other	Yes/no

Customer Sign Off: _____ **Date:** _____ **Time:** _____

Printed Name: _____

Service Engineer: _____

Service Agent: _____

NOTE IF PARTS NOT FOUND NOT TO BE DEFECTIVE AFTER INVESTIGATION, WE RESERVE THE RIGHT TO RECOVER MATERIAL AND LABOUR COSTS