

PLD007RH-04A



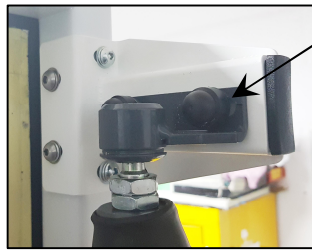
INSTALLATION DATA & IMAGES FOR A MANUAL PANTOGRAPH CASSETTE DOOR SYSTEM

Right Hand as Viewed from inside



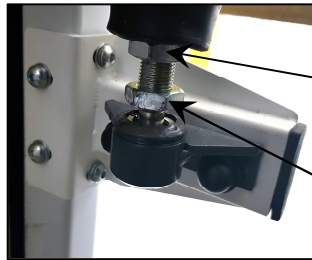
ISSUE 1 . 06/12/2019

DOOR ADJUSTMENT & LOCK CATCH PINS GUIDELINES



To align door/shaft with portal frame/aperture in a vertical plain.

To adjust inward or outwards use M10 hex head screw -nuts (17mm A/F) behind plastic cap



M16 LOCKING NUT (24mm A/F)

SPH BALL JOINT NUT (24mm A/F)

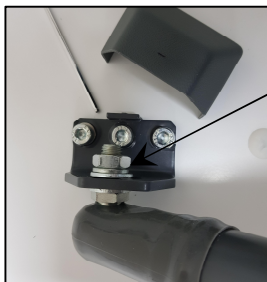
To Raise or Lower Door Leaf

First slacken off locking nuts (24mm A/F) at top & bottom

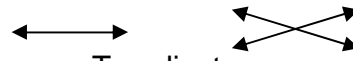
To Raise: Rotate Lower Sph ball joint (24mm A/F) lower nut Clockwise & Top Sph ball joint Anti-Clockwise.

To Lower: Rotate Lower Sph ball joint (24mm A/F) lower nut Anti-Clockwise & Top Sph ball joint Clockwise.

Then tighten nuts to retain door leaf & shaft in position.



To align door inside portal frame/aperture In a horizontal (vertical) plain, forward and back



To adjust use

M12 hex nuts (19mm A/F) behind ABS cover



For aligning door on closing with portal frame/aperture.

To adjusting door leaf leading edge to toe in or out.

Unlock stabilizer bar, slacken off at each end

M10 hex nuts (17mm A/F) RH & LH thread

Rotating stabilizer bar clockwise to toe in.

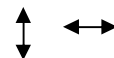
Anti-clockwise to toe out.



To align door lock pin with door catch.

Note: catch pins must lock in position on second latch with door in the fully closed position

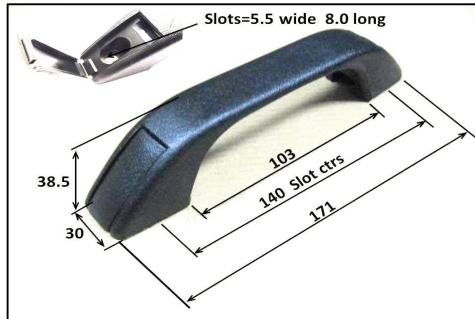
Slacken off Lock Pin (19mm A/F) and then slacken off 2 x M6 bolts (10mm A/F) just enough to move Lock Pin & plate in any direction.



Until lock pin is in the required position, finger tight Lock Pin or use spanner to hold everything in place, and then tighten full M6 bolts and Lock Pin

Additional Pull Handle if required Used Internal or External

HDL001-03

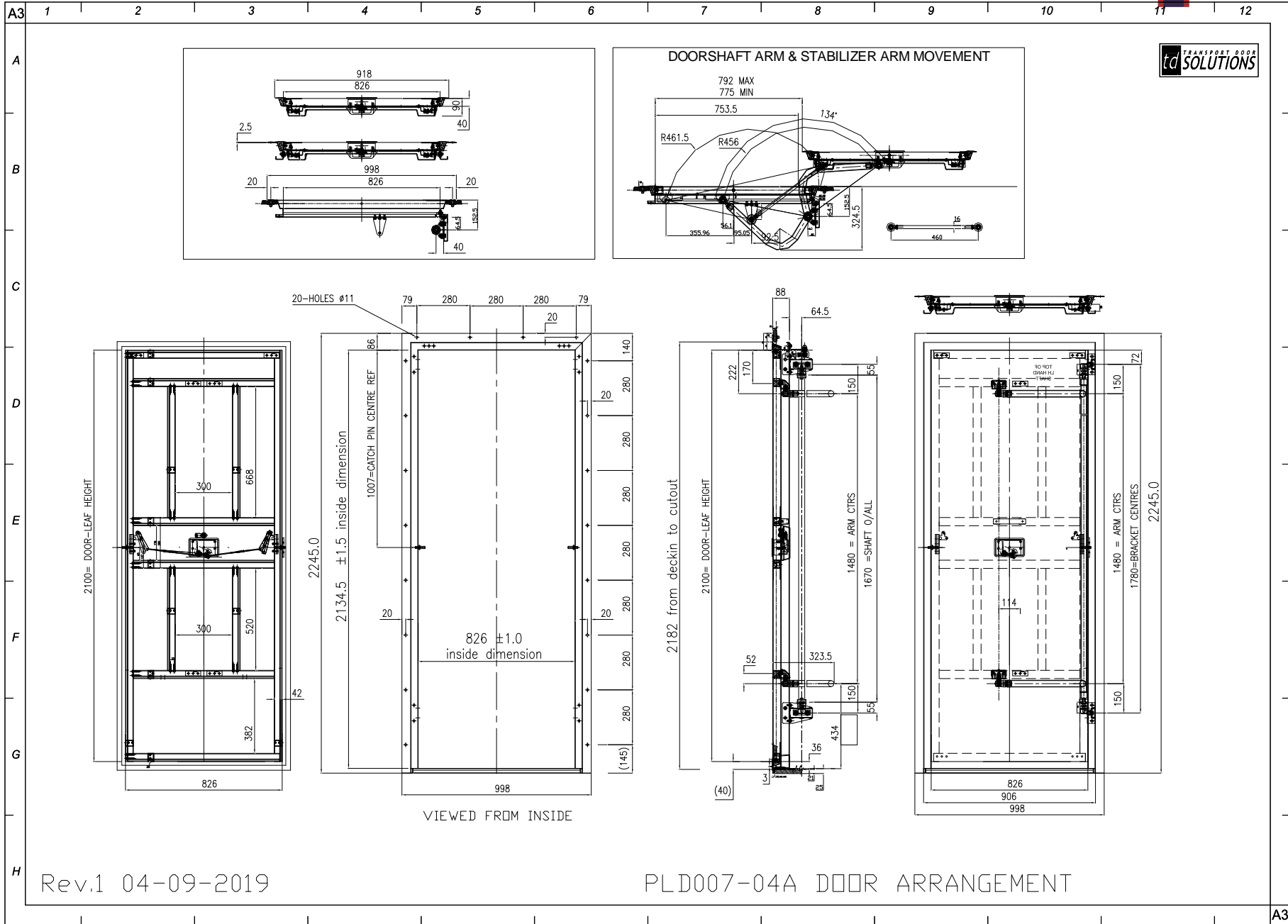


1 x HDL001 = PULL HANDLE BLACK
2 x SCR81025-PA1= No10x1+S/TAP-POZ-PAN-HD-BZP
DRILL SIZE=Ø4.2

EXTERNAL PULL HANDLE
SHOWN WHEN PLUG DOOR FITTED HIGH ABOVE
WAST LEVEL. SO YOU CAN PULL DOOR SHUT FROM
GROUND LEVEL
150mm UP FROM BOTTOM OF DOOR LEAF FRAME,
POSITION

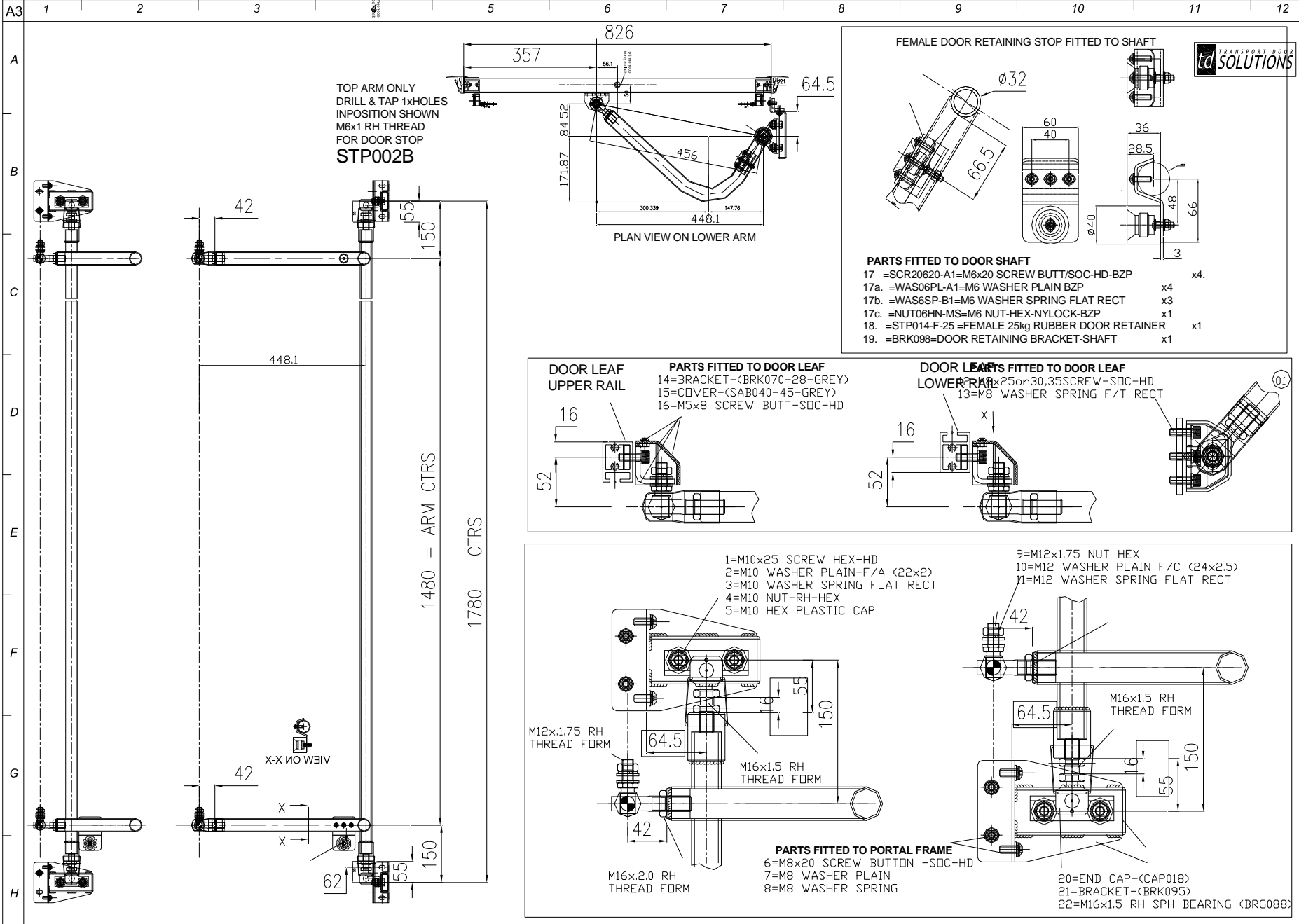
INTERNAL PULL HANDLE
SHOWN WHEN PLUG DOOR IS FITTED WITH LOW
LEVEL EXIT FLOOR/STEP SO YOU CAN PULL DOOR
SHUT FROM GROUND LEVEL AND FROM INTERNAL
FROM TOP STEP
50mm UP FROM ABS LOCK COVER, POSITION





Rev.1 04-09-2019

PLD007-04A DOOR ARRANGEMENT



TOP ARM ONLY
 DRILL & TAP 1xHOLES
 IN POSITION SHOWN
 M6x1 RH THREAD
 FOR DOOR STOP
 STP002B

PLAN VIEW ON LOWER ARM

FEMALE DOOR RETAINING STOP FITTED TO SHAFT



- PARTS FITTED TO DOOR SHAFT**
- 17 =SCR20620-A1=M6x20 SCREW BUTT/SOC-HD-BZP x4.
 - 17a. =WAS06PL-A1=M6 WASHER PLAIN BZP x4
 - 17b. =WAS6SP-B1=M6 WASHER SPRING FLAT RECT x3
 - 17c. =NUT06HN-MS=M6 NUT-HEX-NYLOCK-BZP x1
 - 18. =STP014-F-25=FEMALE 25kg RUBBER DOOR RETAINER x1
 - 19. =BRK098=DOOR RETAINING BRACKET-SHAFT x1

- DOOR LEAF UPPER RAIL**
- PARTS FITTED TO DOOR LEAF**
- 14=BRACKET-(BRK070-28-GREY)
 - 15=COVER-(SAB040-45-GREY)
 - 16=M5x8 SCREW BUTT-SOC-HD

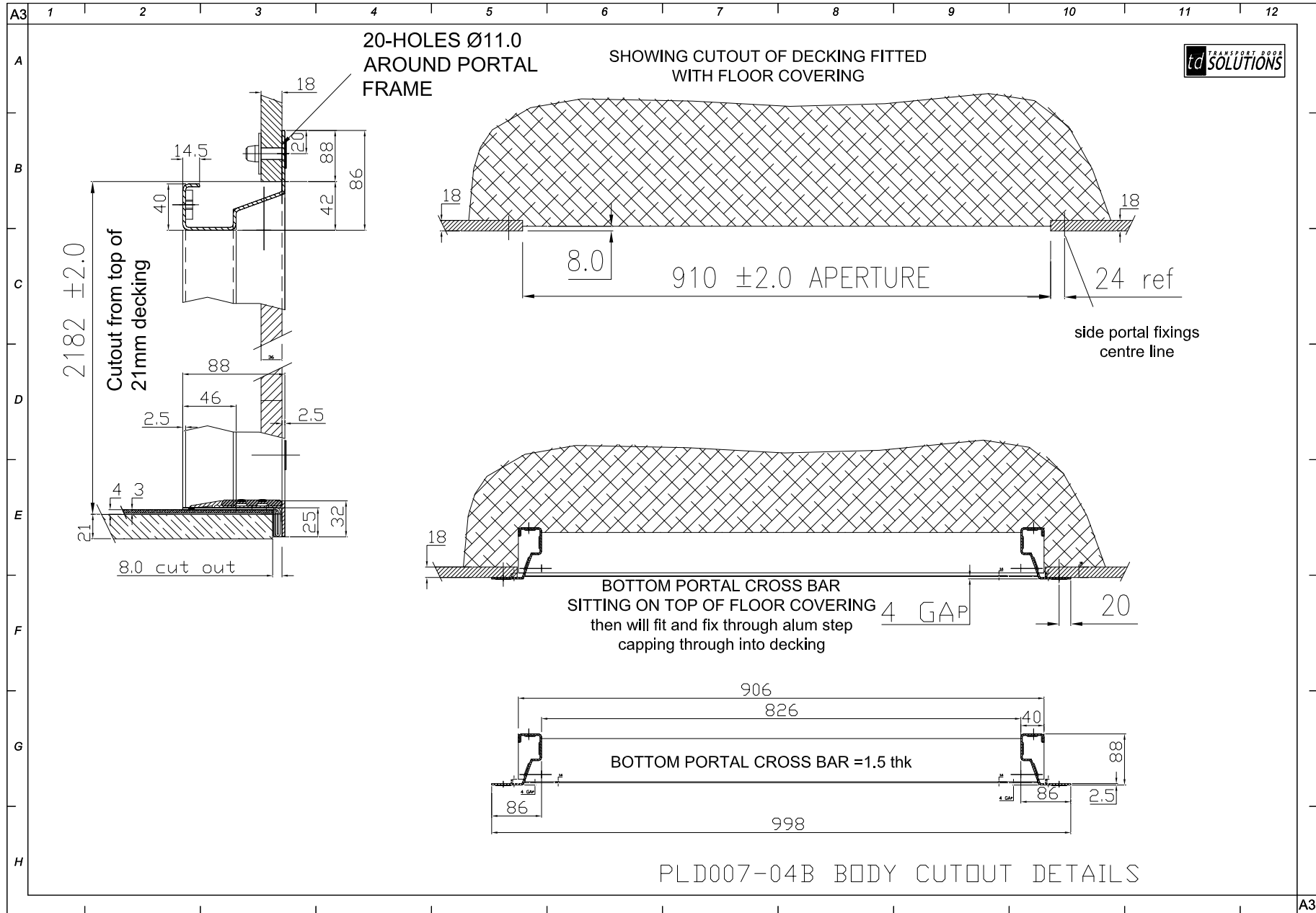
- DOOR LEAF LOWER RAIL**
- PARTS FITTED TO DOOR LEAF**
- 13=M8 WASHER SPRING F/T RECT

- PARTS FITTED TO PORTAL FRAME**
- 1=M10x25 SCREW HEX-HD
 - 2=M10 WASHER PLAIN-F/A (22x2)
 - 3=M10 WASHER SPRING FLAT RECT
 - 4=M10 NUT-RH-HEX
 - 5=M10 HEX PLASTIC CAP

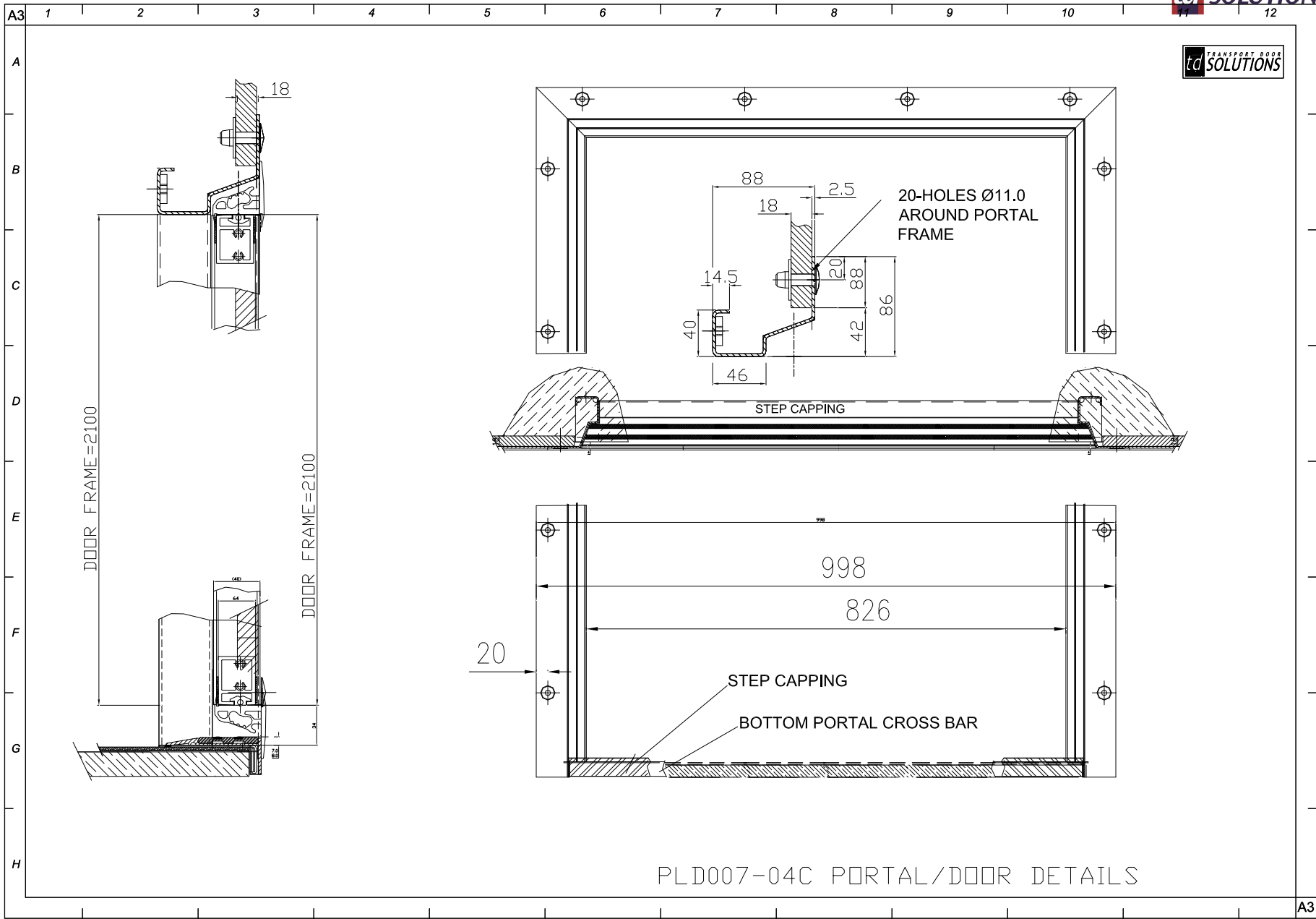
- 9=M12x1.75 NUT HEX
- 10=M12 WASHER PLAIN F/C (24x2,5)
- 11=M12 WASHER SPRING FLAT RECT

- PARTS FITTED TO PORTAL FRAME**
- 6=M8x20 SCREW BUTT -SOC-HD
 - 7=M8 WASHER PLAIN
 - 8=M8 WASHER SPRING

- 20=END CAP-(CAP018)
- 21=BRACKET-(BRK095)
- 22=M16x1.5 RH SPH BEARING (BRG088)



A3



PLD007-04C PORTAL/DOOR DETAILS